

Hello,

unfortunately I could not find anybody until now who has knowledge about the origins of the 987801 characters. Mr. Kappler thinks that the special fonts have not been designed specially for 97801 terminals but that the definition comes from printer font that have been available at that time.

I was looking a little bit to the definition of the characters in the terminal specifications and for similar characters in other font and will give you what I found.

1. Brackets

Brace middles 56-59, 76 to 79 (which is obviously a bold version of 56 - 59):

I am using MS Word 97 and found these characters in two special character fonts:

56: } in Symbol, last row

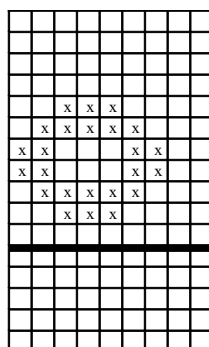
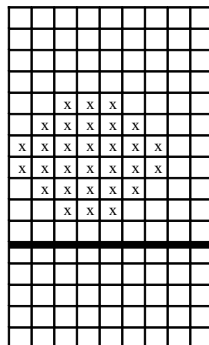
57: { in Symbol, last row

58: ˘ in MT Extra first row

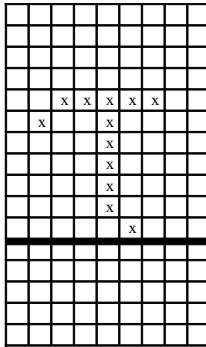
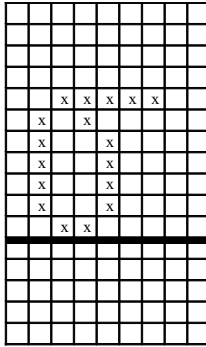
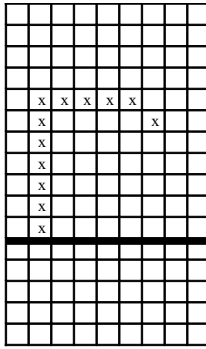
59: ˘ in MT Extra first row

So probably they have Unicodes.

The superscript ovals (position 3E, 3F) are no superscripts. Looking to the pixel definition of the characters in the manual of the terminal (page 157, characters 18E, 18F), they look like that:



The Greek characters are base characters, a little bit smaller than the normal Greek characters.



The characters 36 to 3B: I don't know.

2. Facet

Unfortunately I have no information.

3. IBM

6C, 6D, 7C, 7D are mathematical signs. You can find these characters in MS Symbol: ∞ , \approx (equal about), ∞ (infinity), Σ (sum). So probably they have Unicodes. In the terminal 97801 spec they look like that:

